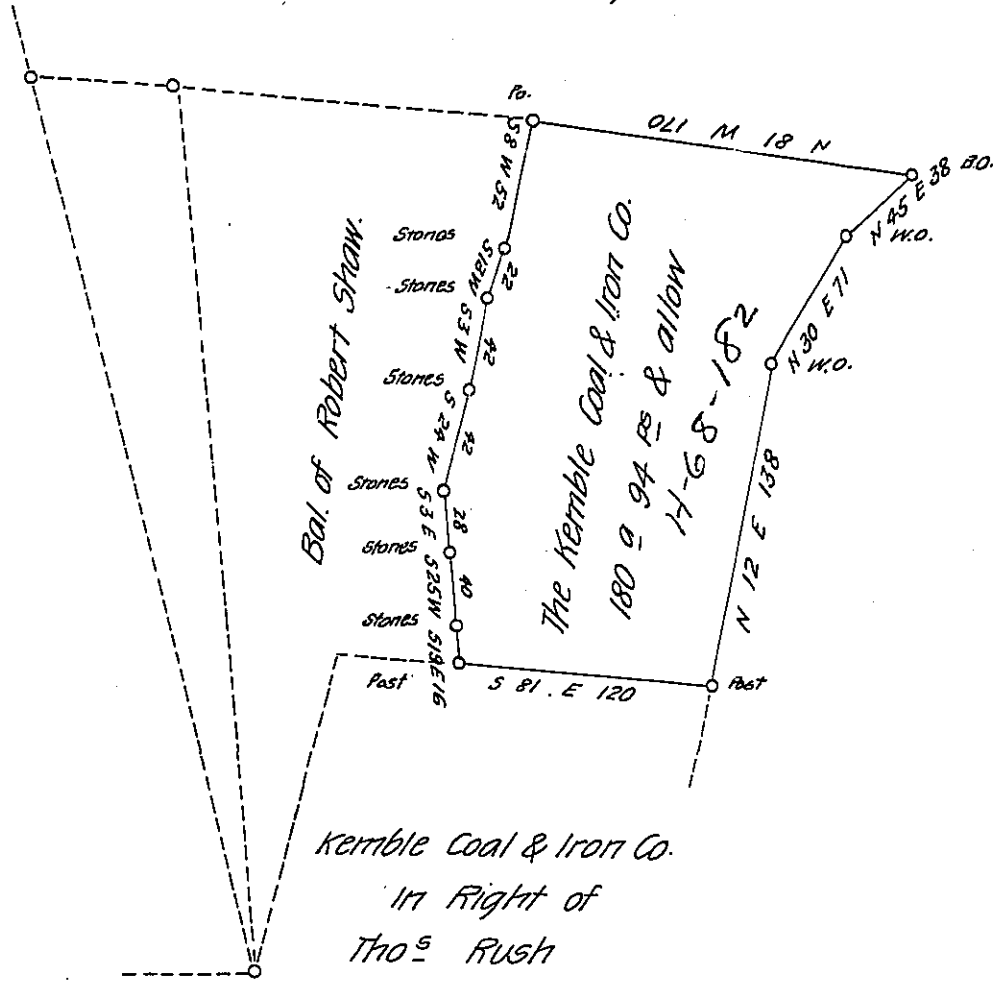


Kemble Coal & Iron Co.  
In right of Saml Ruff



Situate on the East Side of Tussey's Mountain in Hopewell Township  
 Bedford County Containing 180 <sup>as</sup> ~~ac~~ 94 ps and the usual allowance of Six per  
 Cent for Roads. Surveyed for the Kemble Coal & Iron Co. being a part of a larger  
 tract of land containing 424 <sup>as</sup> 50 per & allowance Originally Surveyed on  
 Warrant to Robert Shaw dated 18<sup>th</sup> day of March A D 1794

Saml Ketterman C. S.

To J. M. Campbell Esqr

S. G.

IN TESTIMONY that the above is a copy of the original remaining on file in  
 the Department of Internal Affairs of Pennsylvania, made  
 conformably to an Act of Assembly approved the 16th day of  
 February, 1833, I have hereunto set my Hand and caused  
 the Seal of said Department to be affixed at Harrisburg,  
 this third day of April 1907

*Isaac B. Brown*  
 Secretary of Internal Affairs.